

Adrian Arleo at Radius Gallery: Ceramic Excellence Finds an In-State Home

Radius Gallery in Missoula celebrates its 10th anniversary this year. The gallery has grown steadily since 2014, keeping pace with the amazing renaissance of Montana's contemporary art scene. In March of 2023 Radius launched an ambitious expansion: an all-ceramics gallery called Clayworks next door to its downtown space.

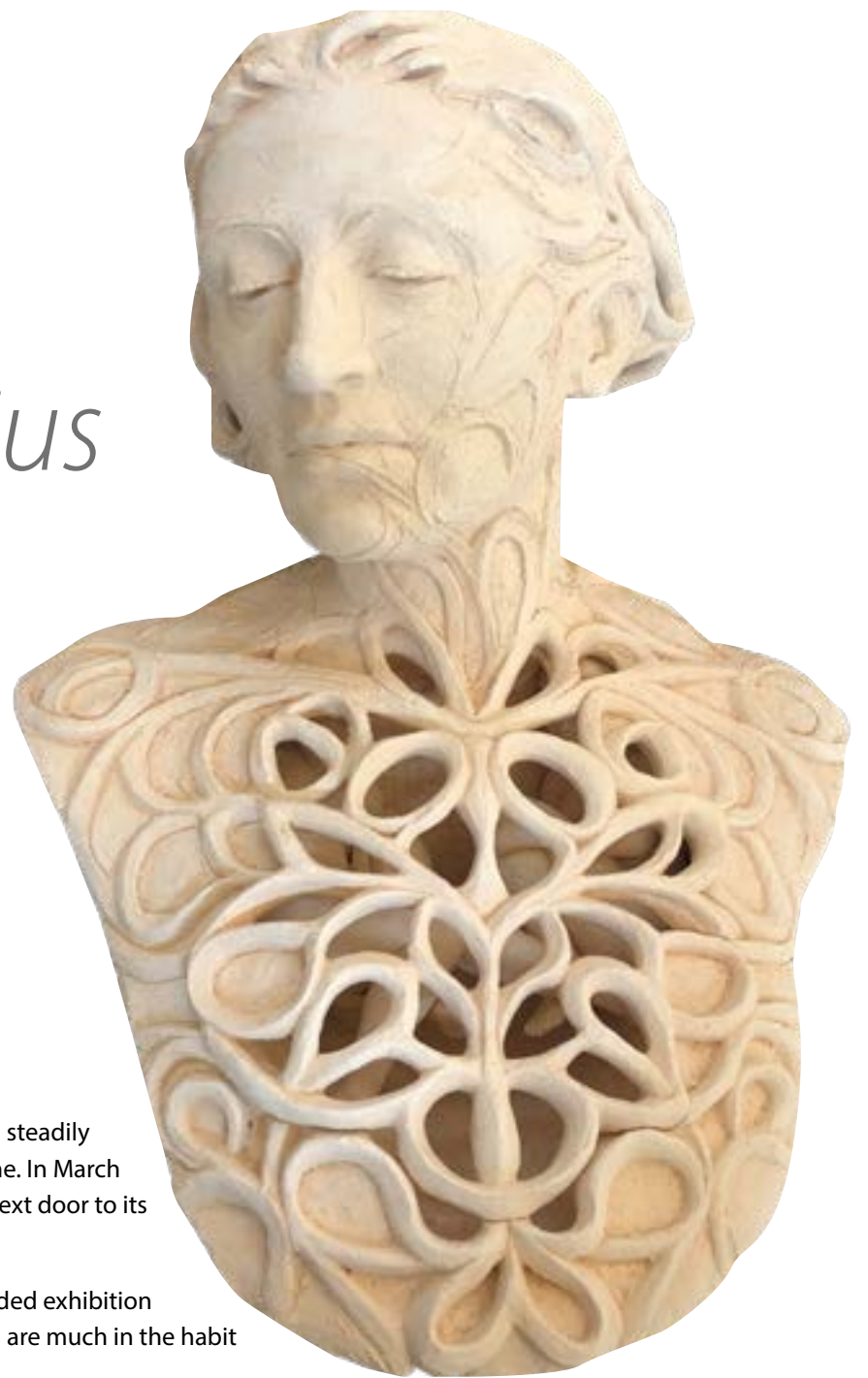
Montana's ceramic arts scene is thriving and the Clayworks expansion creates a much-needed exhibition space—particularly for artists who make large-scale figurative and conceptual artworks and are much in the habit of shipping their creations to out-of-state galleries.

Adrian Arleo, a sculptor of large figurative works with an international reputation, has an upcoming show at Radius Clayworks, Jul 26 – Sep 7. Arleo expresses relief for not needing to crate and ship her works out of state for this major exhibit, a practice that has been necessary for the majority of her career in Montana.

At publication, these new sculptures fill her studio in Lolo in various states of finish—some still wet clay, some in the pre-glazed bisque state, and some in pieces that will be fitted together later. It represents more than a year's worth of work, and with only weeks to go she's feeling the anticipation and anxiety of representing, in full, the ideas that hold this series together.

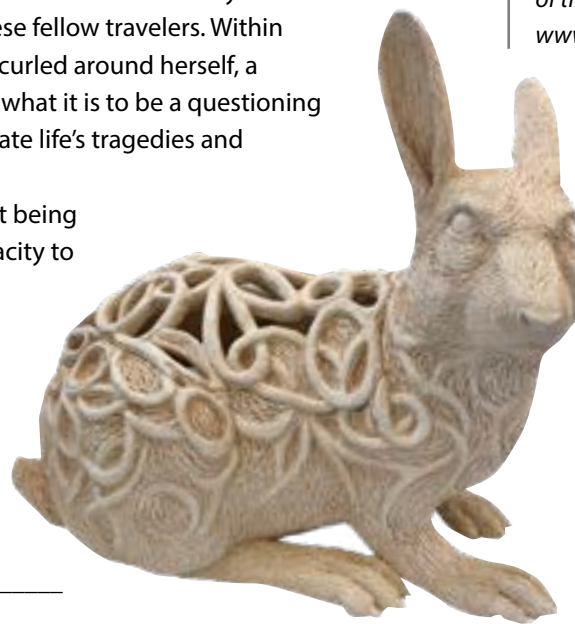
And the ideas are worthy of our attention. Consider the figures—humans, dogs, a rabbit—with beautifully sculpted scroll-work surfaces that allow us to see, literally and imaginatively, inside these fellow travelers. Within the delicate cages of these bodies are smaller figures—a couple embracing, a woman curled around herself, a songbird alongside a hawk, predator and prey. Most of the work suggests rumination, what it is to be a questioning inheritor of this 21st Century, still tentatively feeling our way along. How do we negotiate life's tragedies and confusion, its daily drip of bad news, and make sense of the world through language, myth, and our own felt desires? Can we remain attentive to the world's turmoil without being tapped of our compassion? How do we remain sensitized to beauty, maintain our capacity to appreciate other forms of life and our relationships to them?

These and other weighty considerations should not be crated up and trucked out of state. We must embrace every opportunity to simply sit with and contemplate what Montana's great artists have to offer. Adrian Arleo's exhibit is a gift, we the lucky recipients.



To see the exhibit:
Visit Radius Gallery,
120 N Higgins Ave, Missoula.
Hours Tues – Friday 11 – 6;
Sat 11 – 3pm.

To sign up for an online preview
of the Arleo exhibit visit:
www.radiusgallery.com



New Works by Steven Young Lee and Beth Lo presented by Radius Gallery

June 7 – July 20

Renowned Montana-based ceramists Steven Young Lee and Beth Lo will be debuting their latest exhibition at Radius Clayworks June 7th. This show will feature a return to larger, ambitious vessels and vases, including a few of their coveted collaborative pieces.

Both Steven Young Lee and Beth Lo work in the ceramic medium to explore the intersections of cultural heritage and Westernization, tradition, and personal experience, place and belonging.